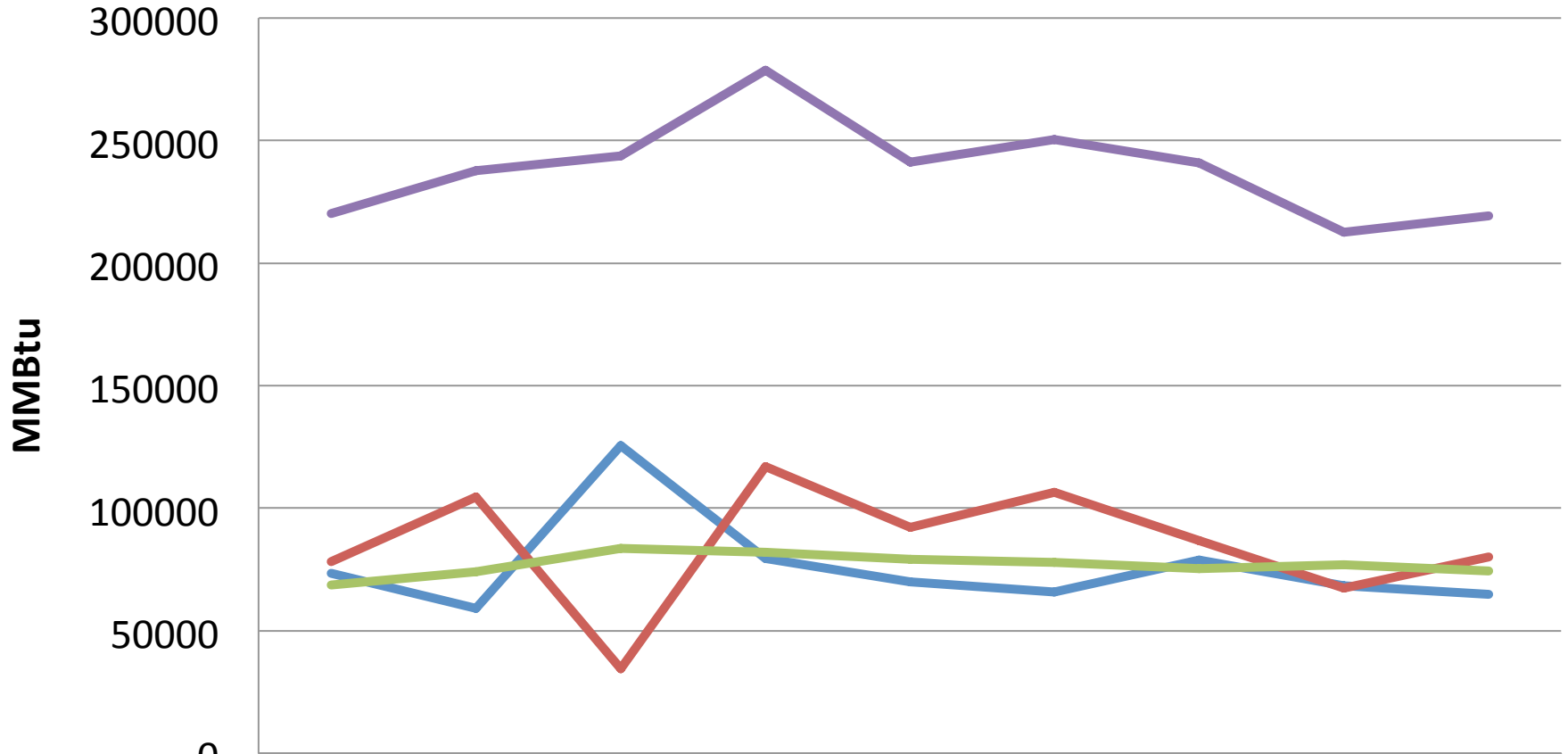
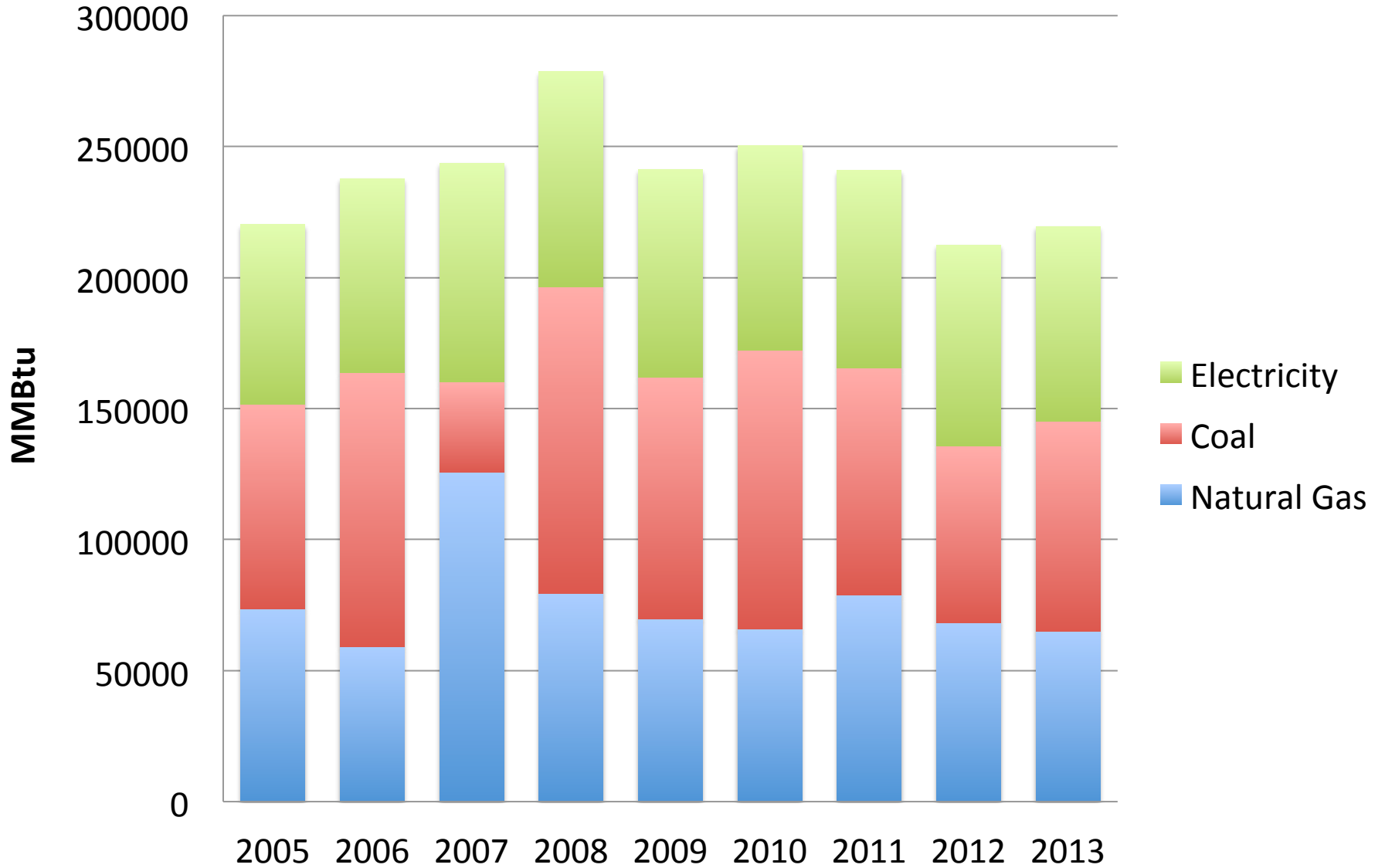


Annual Energy Use by Fuel Source



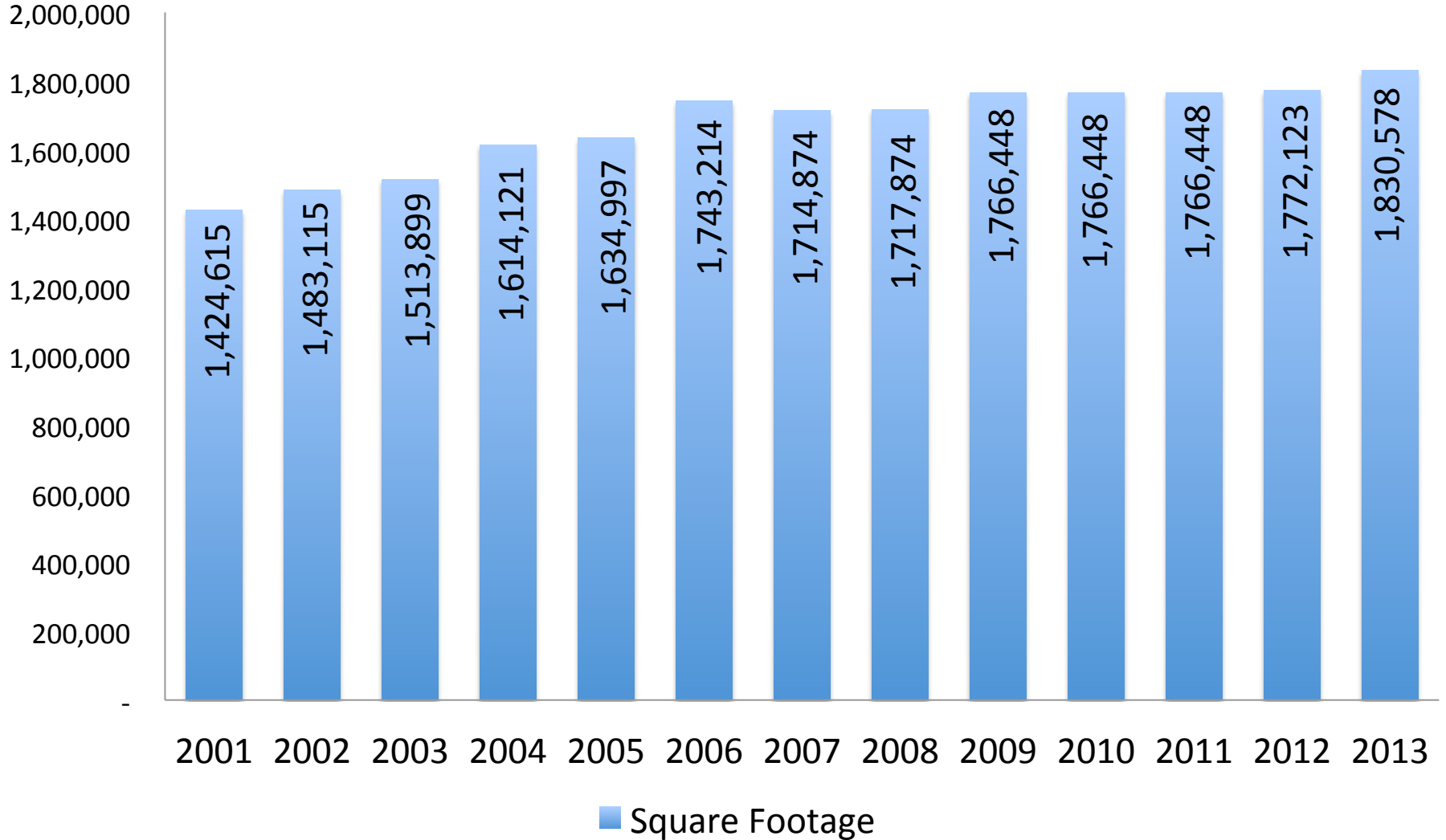
| | 2005 | 2006 | 2007 | 2008 | 2009 | 2010 | 2011 | 2012 | 2013 |
|---------------|---------|---------|---------|---------|---------|---------|---------|---------|---------|
| — Natural Gas | 73485 | 58984 | 125604 | 79572 | 69852 | 65895 | 78869 | 68205 | 64951 |
| — Coal | 78183 | 104727 | 34503 | 116928 | 92211 | 106470 | 86730 | 67452 | 80178 |
| — Electricity | 68553 | 73923 | 83556 | 82063 | 79095 | 77990 | 75232 | 76853 | 74268 |
| — Total MMBtu | 220,221 | 237,634 | 243,663 | 278,562 | 241,157 | 250,355 | 240,831 | 212,510 | 219,397 |

Annual Energy Use by Type

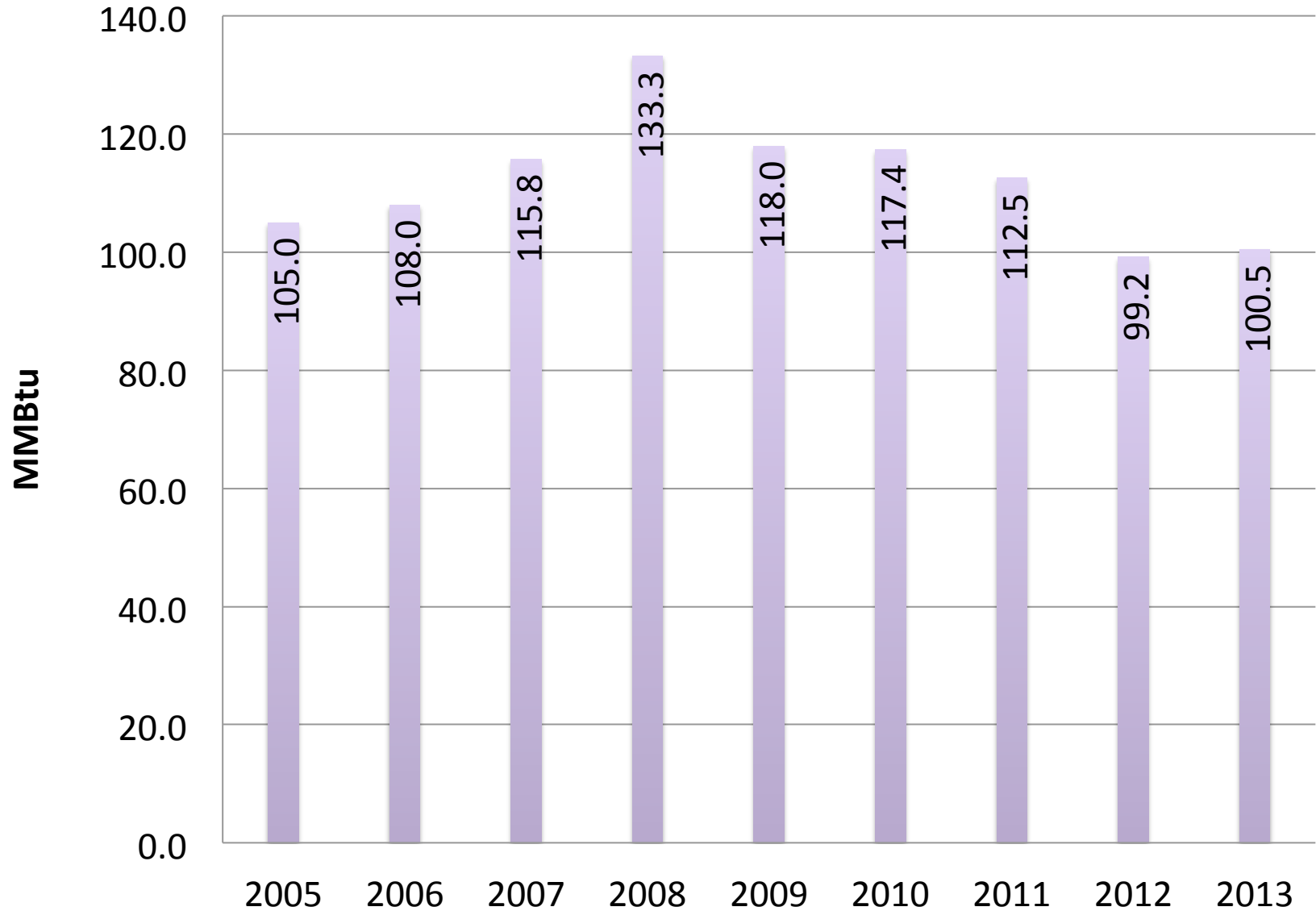


Campus Square Footage by Year

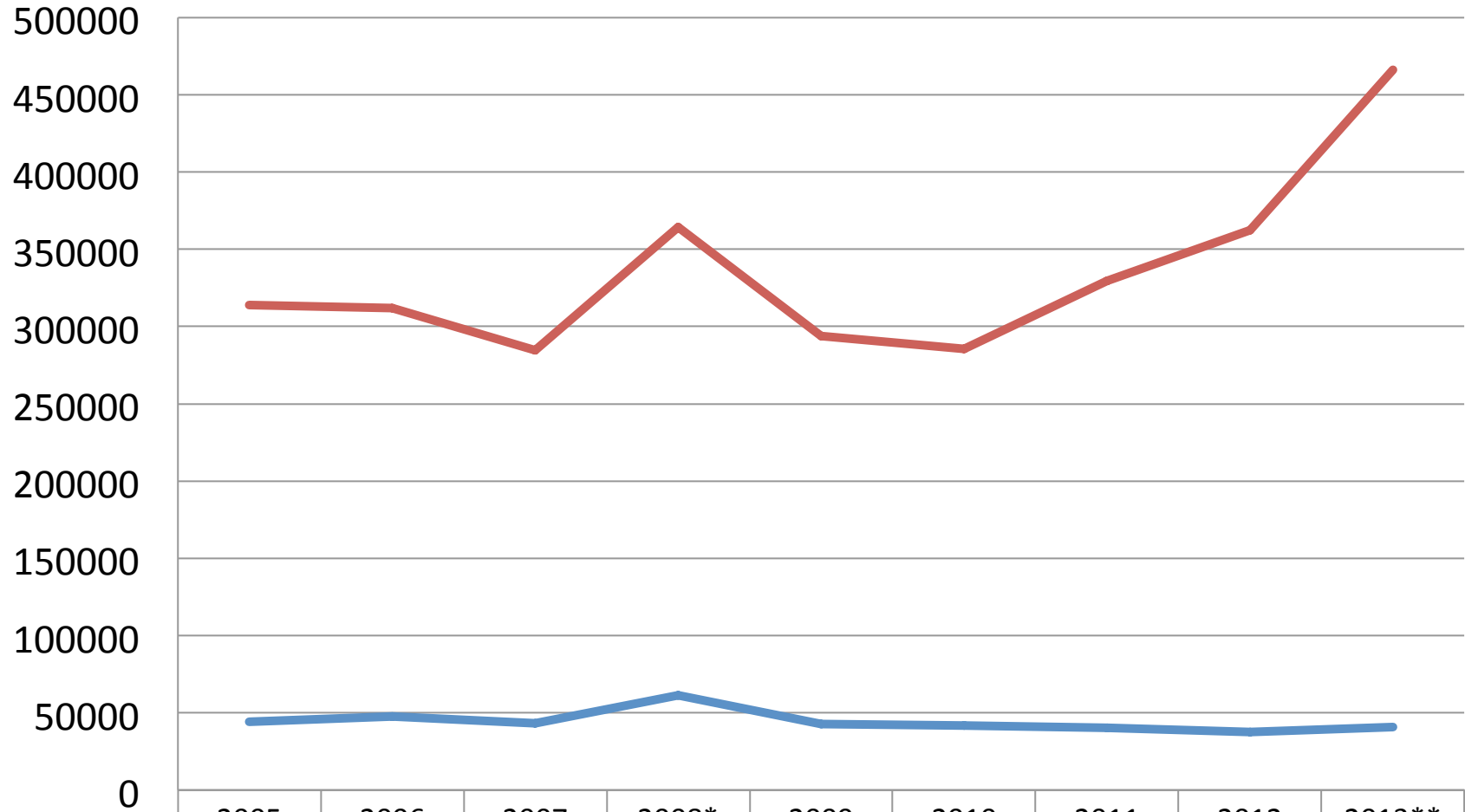
Climate Controlled Spaces



Annual Energy Use per Full Time Student



Annual Water Consumption & Cost of Water



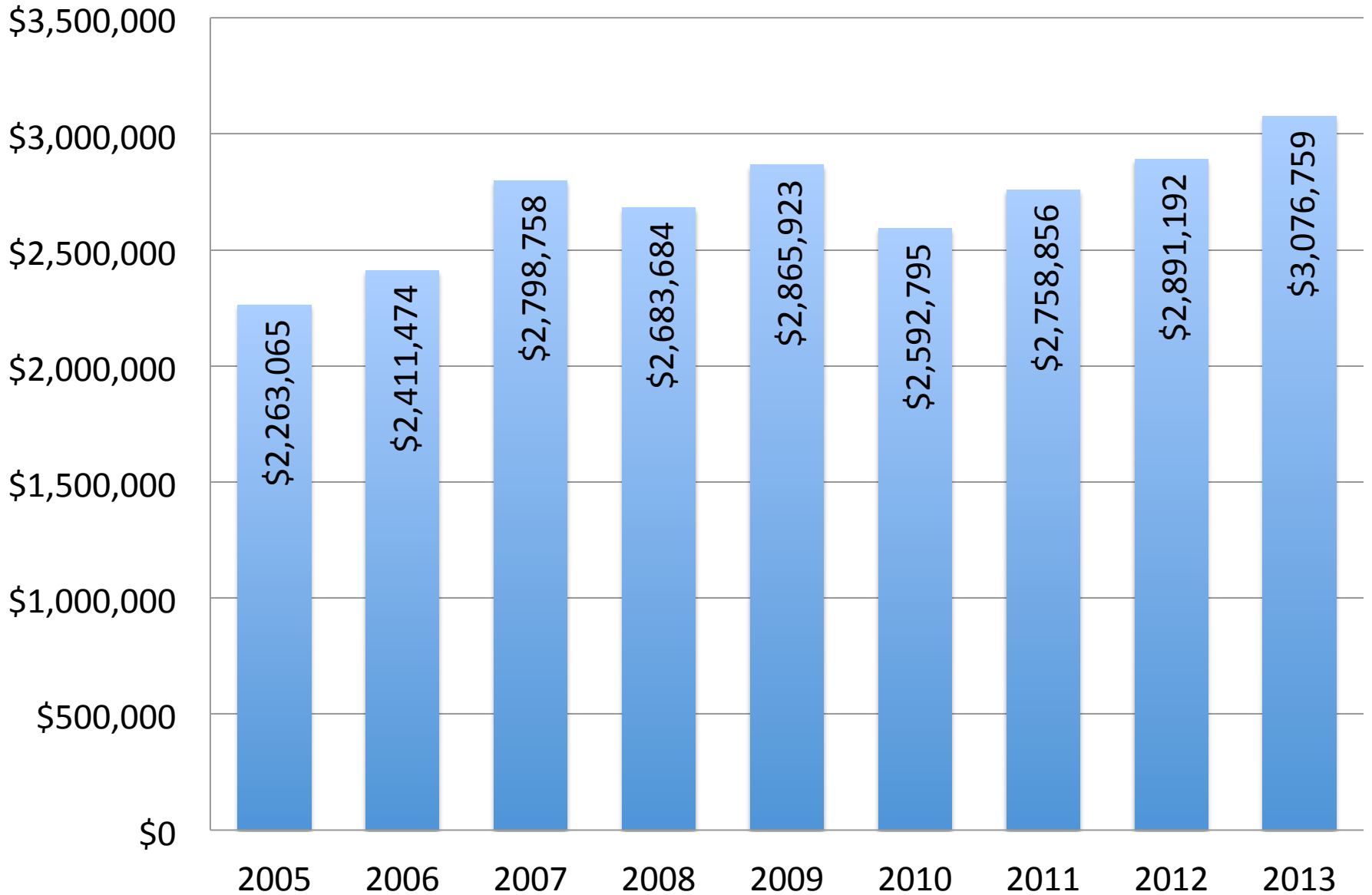
| | 2005 | 2006 | 2007 | 2008* | 2009 | 2010 | 2011 | 2012 | 2013** |
|-------------------|-----------|-----------|-----------|-----------|-----------|-----------|-----------|-----------|-----------|
| Water (gal x1000) | 44329 | 47807 | 43280 | 61219 | 42746 | 41627 | 40142 | 37587 | 40714 |
| Cost | \$313,694 | \$311,844 | \$284,658 | \$364,580 | \$293,907 | \$285,400 | \$329,740 | \$362,265 | \$465,946 |

* Village of Granville realized that they had not been reading the meter at the chiller plant for over a year

**Filled the new pool 3 times ~3M gallons; added a third water-cooled chiller

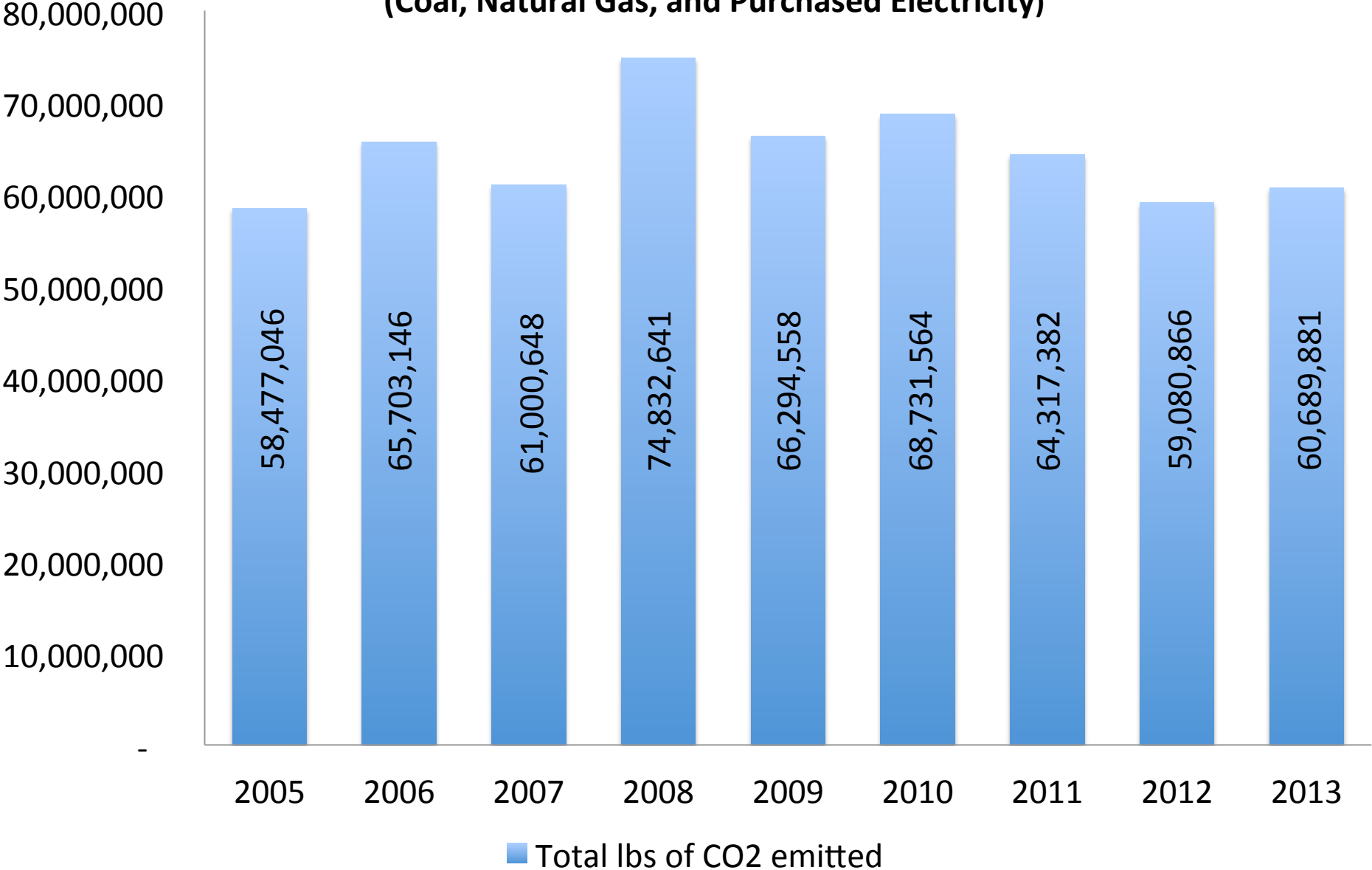
Utilities Cost

Coal, Natural Gas & Electricity

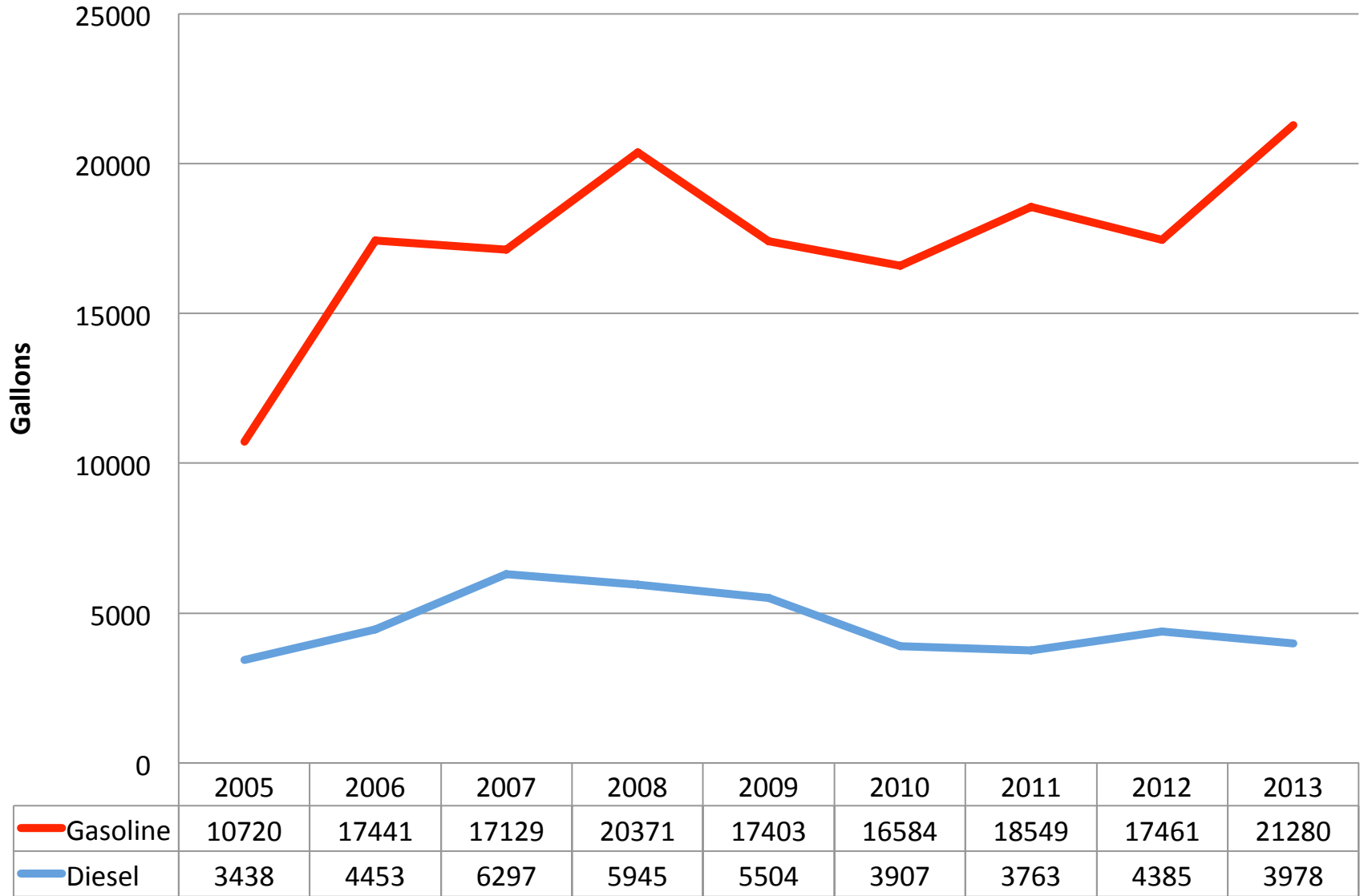


Campus Carbon Footprint

Scope 1 and Scope 2 Emissions (Coal, Natural Gas, and Purchased Electricity)

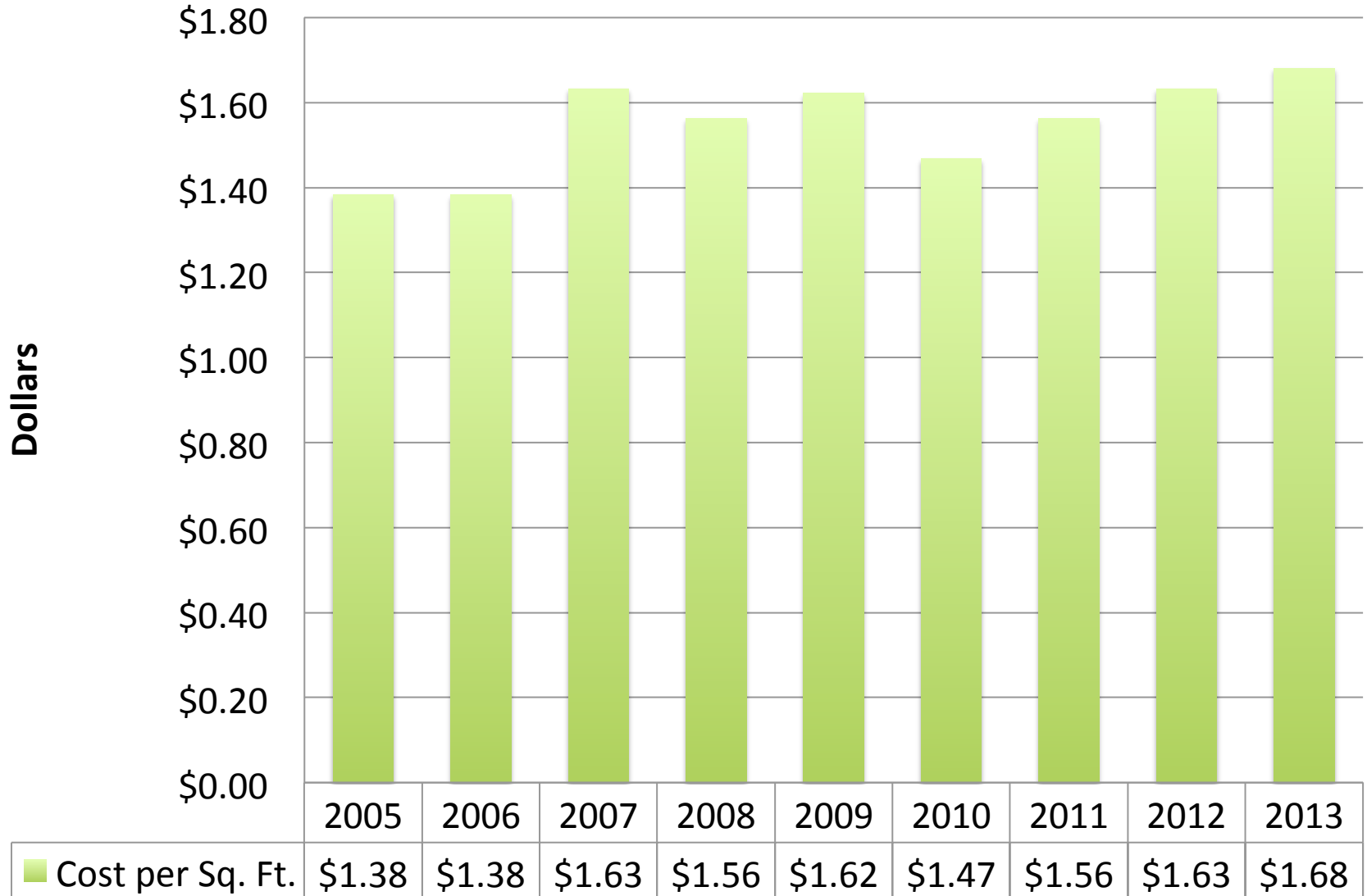


Annual Gasoline & Diesel Usage in Gallons



Notes: These values represent fuel used by Facilities vehicles & equipment, Safety & Security vehicles, Biological Reserve vehicles & equipment, physical education vehicles & equipment, mail van and golf cart, ITS golf cart. All other vehicles in the campus fleet (primarily leased vehicles) have gas cards and are not tracked by this chart.

Utilities Cost per Ft² of Campus Buildings



Campus Utility Costs Compared to CO₂ Emissions

2005 to 2013

