



Trail Guide

Catalpa Trail -- .3 km

Crinoid Hill Trail -- .2 km

Cuckoo Trail -- .9 km

Flying Squirrel Trail -- .2 km

Hyacinth Trail -- .5 km
(Closed to bikes)

Norpell Woods Loop Trail -- 1.2 km

Osage Trail -- .2 km

Ovenbird Loop Trail -- .2 km

Quarry Trail -- .7 km

Sugar Bush Trail -- .3 km

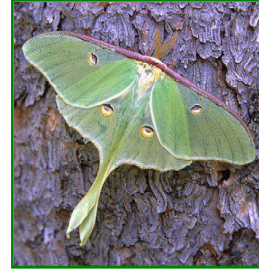
Taylor Ochs Loop Trail -- 3.5 km
(Closed to bikes)

Waxwing Loop Trail -- .4 km

White Tail Loop Trail -- 2.5 km

Woodcock Trail -- .4 km

Regulations



The Biological Reserve and Polly Anderson Field Station are under the direction of Whitney Stocker (587-6359)

- 1) The Reserve is open daily from dawn to dusk. Visitation after dark only by permission of the director.
- 2) Motorized vehicles and horseback riding are prohibited.
- 3) Dogs may be walked on trails but must be on leash to minimize stress to wildlife.
- 4) Collection of mushrooms, wildflowers or any organism is prohibited unless permission has been obtained from the director.
- 5) No off-trail hiking.
- 6) Hunting and discharge of firearms are strictly forbidden within Reserve boundaries.
- 7) Mountain bikes and skiing are permitted on trails unless marked. Trails are subject to seasonal closure to prevent trail damage.
- 8) Open fires and camping are prohibited.
- 9) Consumption of alcohol or drugs on Reserve property is prohibited.
- 10) Pack out trash and litter.



The Denison University Biological Reserve

Denison's Biological Reserve (DUBR) was established in 1966 through the efforts of

Professor Bob Alrutz, who served as director until his retirement in 1990. The Reserve encompasses 350 acres in three contiguous sections. Approximately 75% of the acreage is Beech/Maple mixed with mesophytic forest interspersed with former orchards, plantations, and pastures. Four ponds and three natural springs provide habitat for aquatic organisms. The Reserve is a refuge for numerous amphibians – turtles, snakes, bats, flying squirrels, white tailed deer, red fox, and over one hundred species of bird. The Reserve is managed especially to maintain a high diversity of both habitats and species.

The purpose of the Reserve is to enrich the educational experience of Denison students in the areas of biology and environmental science. Courses in Biology, Geology, and Environmental Studies meet in the Polly Anderson Field Station, erected in 1995, and use the Reserve as a base of operations for class projects. The Reserve also serves as a site for faculty/student research projects during the summer as well as the school year.

Visitors who enjoy walking in the natural surroundings are welcome at the Reserve. A well-marked trail system allows one to explore a variety of habitats. **Please do not disturb plants, animals, or on-going experiments and obey the regulations. See Back for Regulations.**